



500 N. 81 BY-PASS
McPHERSON, KS 67460
800-677-0898
620-241-3513 PHONE
620-241-3532 FAX
www.femcomfg.com
E-mail: femco@femcomfg.com

INSTRUCTIONS

WEATHER BRAKE

307022552

FOR: JOHN DEERE

5105 & 5205

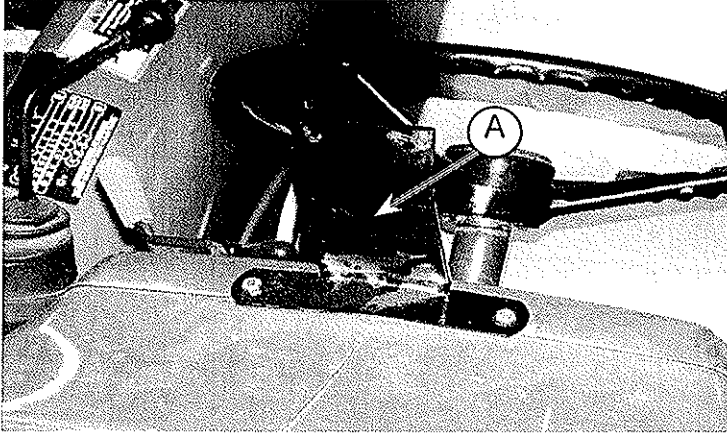
With/Without Loader

2 or 4 Wheel Drive

IMPORTANT

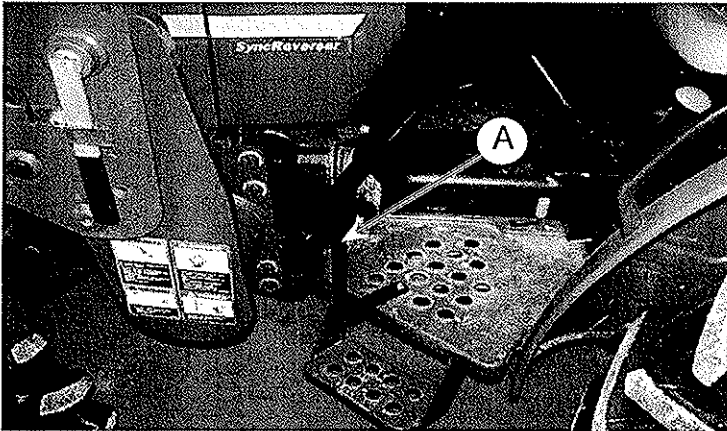
READ AND UNDERSTAND ALL INSTRUCTIONS BEFORE MOUNTING WEATHER BRAKE. DO NOT TIGHTEN HARDWARE UNTIL INSTRUCTED TO DO SO.

YOKE BRACKET



1. Remove two (2) bolts from top of dash cowl.
2. Attach yoke bracket (A) to dash cowl using two (2) M6 x 25MM bolts furnished in hardware bag.
3. TIGHTEN BOLTS.

DOOR POST



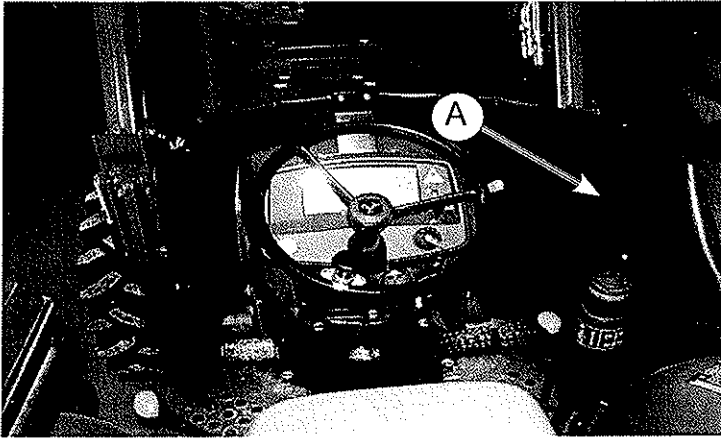
1. Attach door post (A) to left side platform at location shown using one (1) 1/4" x 1" bolt, large flat washer and nut.

MOTOR COVER



1. For tractors that have loaders, remove rip off patches at bottom of motor cover by carefully cutting every fourth thread and remove patches.
2. Lay motor cover over hood of tractor.
3. Slide bottom of 3" hem of motor cover down over top of door post.

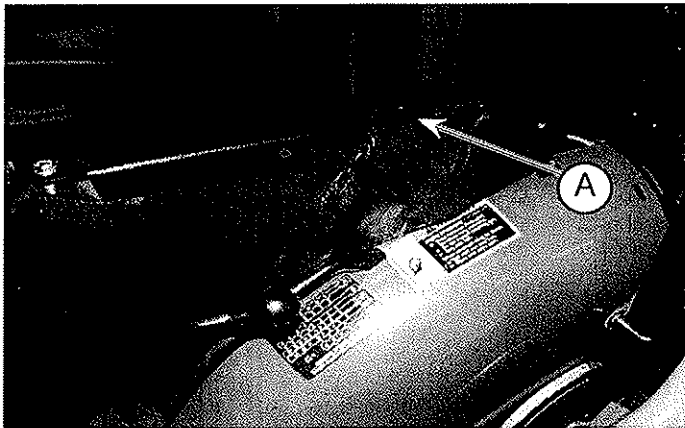
YOKE



286340100...100_1397.JPG

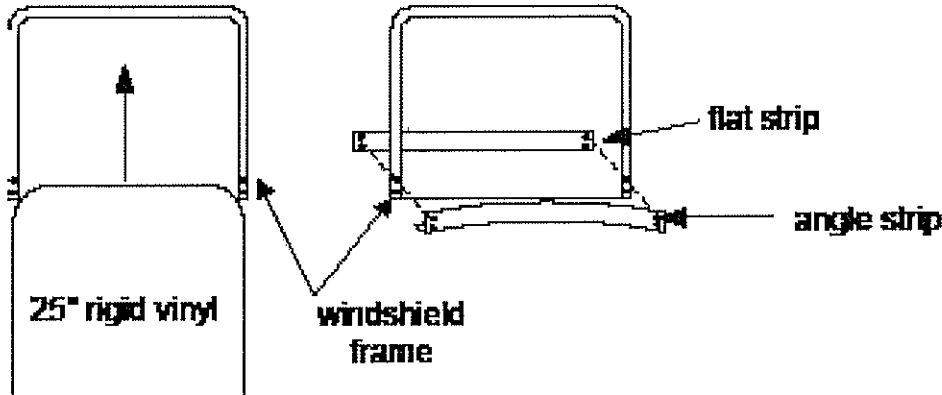
1. Slide yoke (A) into top 3" hem of motor cover.
2. Attach yoke to yoke bracket using two (2) 1/4" x 3/4" bolts and nuts. Heads of bolts to outside, nuts inside.
3. Attach left side of yoke to top of door post using one (1) 1/4" x 1" bolt and nut. Head of bolt to inside, nut outside.

SIDE ARM



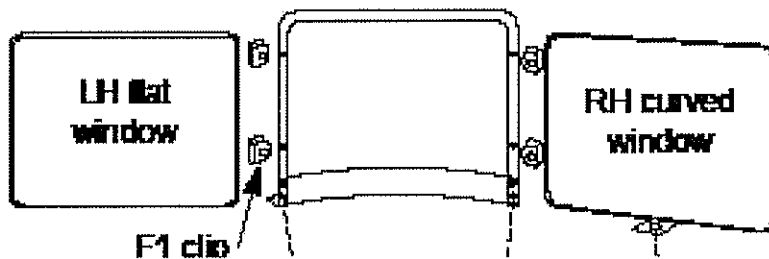
286340100...100_1400.JPG

1. Slide side arm (A) into side 3" hem of motor cover.
2. Attach front of side arm to yoke using one (1) 3/8" x 1" bolt and nut.
3. Snap rear of motor cover around side arm.
4. Locate side arm to fender and drill a 9/32" hole and attach using one (1) 1/4" x 3/4" bolt, large washer and nut.
5. TIGHTEN ALL BOLTS.



WINDSHIELD ASSEMBLY

1. Attach left and right window frames using two (2) 3/16" bolts and nuts.
2. Slide glass into the channel of the windshield.
3. Attach flat strip and angle strip to the windshield frame using two (2) 3/16" x 3/4" bolts and nuts in second holes only.

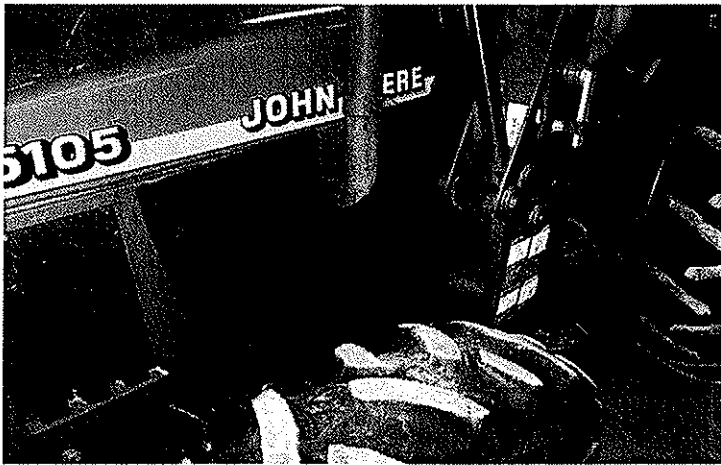


WINDSHIELD ATTACHMENT



286340100..100_1404.JPG

1. Remove nut from left side of yoke and door post.
2. Attach windshield to yoke and door post.
3. Attach other side of windshield to yoke using one (1) 1/4" x 1" bolt and nut.
4. TIGHTEN ALL BOLTS.



286340100..100_1399.JPG

Dual Lock® a registered trademark of 3M Cp. & Tie Straps

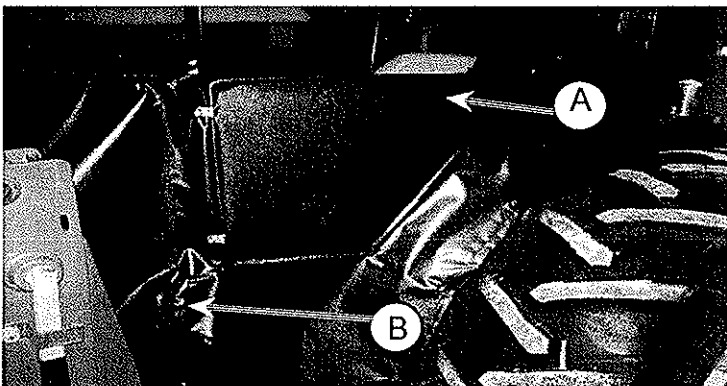
1. Cut plastic Dual Lock into 2" lengths.
2. Surface must be cleaned with a mild detergent to assure proper application of Dual Lock.
NOTE: Do not peel the backing from the dual lock
3. Apply cut Dual Lock to all Dual Lock sewn to motor cover.
4. Arrange motor cover to tractor. Peel backing from Dual Lock and apply to tractor. Repeat this procedure for all Dual Lock.

IMPORTANT

Cloth straps are not to be attached to any moving, rotating, or heat generating points of the tractor. Any excess cloth straps are to be cut off.

IF THERE IS NO LOADER

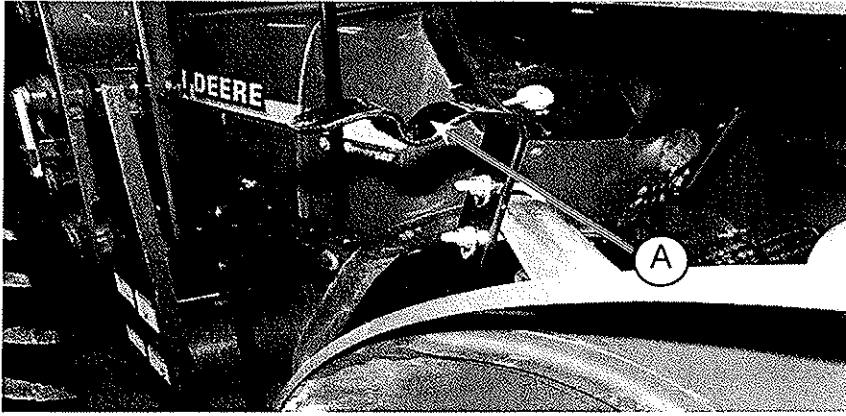
5. Thread cloth strap through grommets at bottom of motor over and tie. Route cloth strap to other side and tie grommets.



286340100..100_1405.JPG

DOOR

1. Mark location of holes in door post and punch holes through fabric of motor cover.
2. Position door (A) to door post with top of door to bottom of windshield and mark location of 3/4" slits to be cut into door.
3. Attach door to post using two (2) F1 clips, 3/16" x 3/4" bolts and nuts.
4. Tie door flaps (B) to straps sewn on motor cover.



286340100...100_1391.JPG

DOOR LATCH

1. Attach door latch (A) to grab handle using one (1) "U" bolt and nuts.
2. Close door and make sure bottom of door sets firmly in loop and tighten nuts



286340100...100_1410.JPG

SIDE WINDOWS

1. Mark location of holes in windshield to left window.
2. Cut 5/8" slots next to wire frame of left window and attach to windshield using two (2) #10 x 3/4" bolts, clips and nuts.
3. 8" from end door cut 5/8" slots in window and door and attach using one (1) #10 x 3/4" bolt clip and nut.
4. Right window is to be bent to conform to right side by placing on a table and bending by hand.
5. Using same procedure as left window, attach right window to windshield and side arm using three (3) #10 x 3/4" bolts, clips and nuts.

All information, illustrations and specifications in this manual are based on the latest information available at the time of publication. The right is reserved to make changes at any time without notice.